

September 2024

TACKLING COURSERS

Hare coursing season has started again and RET are at the forefront of efforts to tackle the issue.

Hare coursing is an illegal sport where a dog is released into a farmers field to chase brown hare. Bets are taken on how fast the dog can turn and catch the hare. At the end, the dogs are allowed to kill the hare.



Hare coursing is a specific offence under the Hunting Act 2004.

Hare coursers trespass on private land to commit offences. They frequently drive 4x4 vehicles across seeded fields causing thousands of pounds worth of damage. They can also be aggressive when challenged.

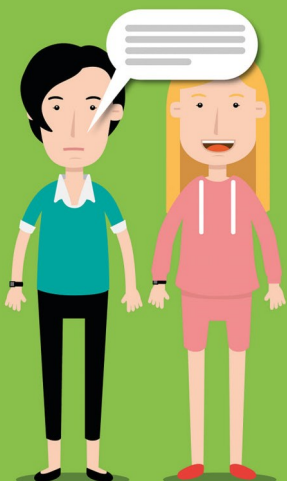
Using heat mapping, intelligence and calls from the

public, the team are focusing patrols in area's with the highest number of coursing incidents.



In September we received 16 calls to hare coursing across Essex. We have seized two cars that had been used by hare coursers and caught one grey hound after suspects ran away from officer's

We know hare coursing is happening across the county and encourage anyone seeing active coursing to call 999. If you have information about hare coursing that isn't happening now, please use the Essex Police website to submit intelligence or crime reports.



Domestic abuse is all about control. If you notice that someone seems to be controlled in all areas of their life, it could be a sign they are being abused.

SETDAB.org

Now there's a quick online alternative to calling 101 or visiting a police station:
DIGITAL 101



Do it online at:
essex.police.uk

**IN AN EMERGENCY
ALWAYS CALL 999**

DRIVING DOWN THEFT

The team have been busy throughout September finding innovative ways to reduce theft in rural areas.

We have started giving out our Selecta DNA property marking kits, funded using criminals money. Selecta DNA is a paint on solution that dries hard and is difficult to remove. It can be applied to farming and construction machinery.



The solution contains a unique code that police can access and immediately find out who the item belongs to.

Trials have shown it significantly reduces thefts.

The first kits have been given to farmers in the Maldon area. RET are working with partners and to identify farmers at greatest risk of theft and offer them kits.



We are also using other ways to mark property and reduce crime.

The team have access to an etching machine. This can write on any surface, from metal to leather. Owners details can be etched permanently onto an item to help prevent theft and aid recovery.

The team held two marking events in September. The first was at Fairy Hall Farm animal feeds in Braintree. Members of the public bought along horse tack and other items which the team marked.



The second event was aimed at horse riders and held at Billericay and District Riding Club in Basildon. Items of tack, including expensive saddles were marked.



LOST DOG FOUND

RET officers returning from a call were surprised to see a dog running around in the carriageway in Chelmsford.

Cars were swerving to avoid the dog which was in danger from traffic as well as causing a risk of accidents.

Officers swiftly caught the dog, which was deaf and had escaped its owner on a dog walk in nearby Hylands Park.

Officers walked around the park with the dog until they located its very relieved owner.

All dogs must be microchipped and registered by law.



ROAD SAFETY

RET continue to patrol our rural road network, seeking to keep the public safe.

We seized 8 cars for having no insurance. 20 traffic tickets were issued for offences such as speeding, using a mobile phone while driving and other matters.



In Maldon the team saw a delivery driver using his phone while driving.

On examination it was found to have three disintegrating tyres and was a danger to other road users. The van was taken off the road.

POLICING OUR HERITAGE

RET have a dedicated force Wildlife and Heritage Crime Office, PC Jed Raven.

PC Raven works with a range of heritage partners to police and safeguard our historic sites.

He was asked to help move a group of people living in tents at Hadleigh Castle who were causing damage to the site.

PC Raven worked with the site management to successfully resolve the issue.



PARISH COUNCIL PATROL

RET were delighted to take the Mountnessing parish clerk out for a patrol this month.

RET work with rural parish councils across Essex. We frequently visit meetings to present on the teams role, as well responding to local issues and acting as a link to local Community Policing Teams.

We were able to show the clerk what the team does and some of the issues locally in Mountnessing.



If you would like RET to attend your meeting email Rural.Engagement.Team@essex.police.uk

FARM WATCH

Sgt Felton attended the regular Dengie Farm Watch meeting in Maldon this month.

This very well established and attended Farm Watch group meet to discuss local crime, issues and support each other.



Sgt Felton gave an update on rural crime across Essex, and specifically in Maldon.

Also in attendance were officers from Maldon Community Policing Team, Essex County Fire and Rescue Service, Maldon District Council, Essex County Council, and Essex Police Modern Day Slavery Team.

If you would like to sign up to one of our watch schemes including Farm, Caravan, Dog or Heritage Watch see the Essex Police website, Essex Watch page.

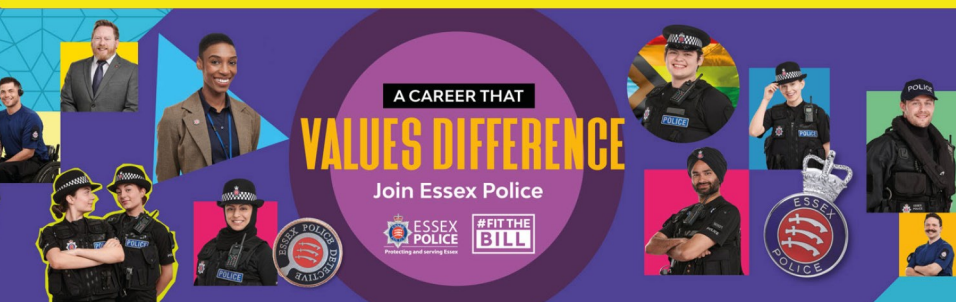


Digital 101

You can report non-emergency crime by calling **101** or by using **Digital 101**, our quick and easy to use online service that's available at any time.



Digital 101 is available on the Essex Police website: [essex.police.uk](https://www.essex.police.uk)



If you, or anyone you know, is interested in protecting and serving Essex, you can follow us on social media, or search **#FitTheBill**